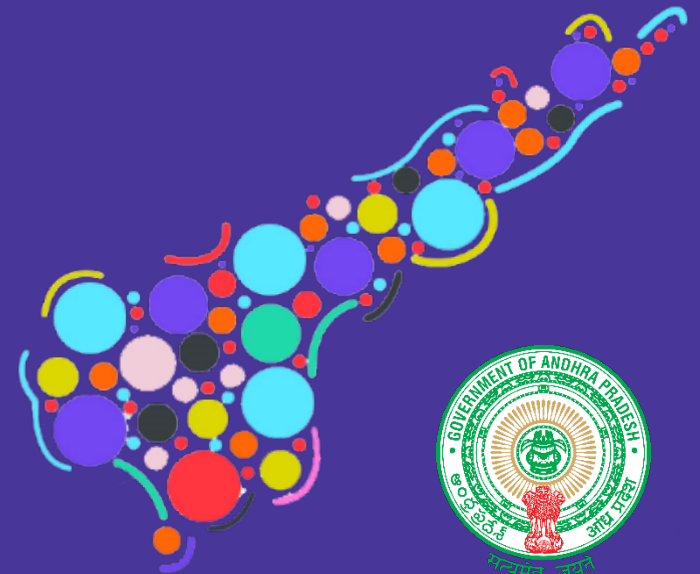


# Leveraging Technology for e-Governance

## CM Office Real-time Executive Dashboard

ITE&C Department,  
Government of Andhra Pradesh

Jan, 2017



# CORE Dashboard?



CORE Dashboard enables:

- Data-led decision making
- Proactive governance
- Monitoring of KPIs
- Ability to track progress of Department's and schemes real-time

It simplifies complex data sets to provide users an **easy to understand snapshot**, of current performance through data visualization.



# Why was CORE Dashboard needed?



Traditional review meetings suffered from certain deficiencies like, loss of time in data collection and report preparation leading to inefficiencies in Government functioning

Data gathering  
at field levels

1

Consolidating  
data into  
reports

2

Review by HOD

3

Dept.  
preparation for  
Hon'ble CM  
review meeting

4

Review by  
Honorable CM

5

Prone to human  
error

Static data - always  
past data

Lack of transparency  
and at departments  
discretion

Multiple iterations in  
reports

Time consuming  
activity

Reviews in person  
resulting in  
extensive traveling

Therefore, there was a need for a much more efficient system which facilitated

**Real time accurate data anytime, anywhere...**

# CORE Dashboard – Inculcating Industry 4.0



## Shifting gears towards Intuitive Governance

10 Lac IoT Devices

Across 33 Department

Built in Analytics

## Across areas such as



Energy



Education



Health



Social Security



Agriculture



Police

# What did CORE dashboard change?



Introduction of CORE Dashboard saw an increase in **virtual review meetings** with **complete data transparency** enabling effective decision making

Data gathering at field levels using >10 lakh IoT devices

1

Fetching data from databases through web services

2

Integration with CORE Dashboard

3

Departments/ Districts Participating through VC

4

Review by Hon'ble CM over VC

5



## Automated

Dynamic/real time Data

Use of IoT eliminates manual intervention

Transparency – no incorrect information

Actionable outcomes

Data Sharing with all departments

Efficient Decision making basis accurate data

# CORE Dashboard - Features



**1** All departments at a glance

**2** KPIs Categorized into Scheme & Situations

**3** Dynamic data update

**4** Filtering & drill down

**5** Automatic generation of SMS Alerts

*Know what you want - With just one click!*

**6** Multi Star Rating Rules

**7** Ranking of Districts

**8** District, Constituency Dashboard

**9** CM Instructions & ATR report

**10** Mobile App, Feedback form

# CORE Dashboard Journey



- Integrated 17 KPIs of 12 departments
- **Portal** available to public, September 2014

- Integrated 90 KPI of 33 Depts
- Categorized KPIs as Schemes, situational reports
- Drill down approach upto operational / beneficiary level
- Automatic **SMS Alerts** to higher officials

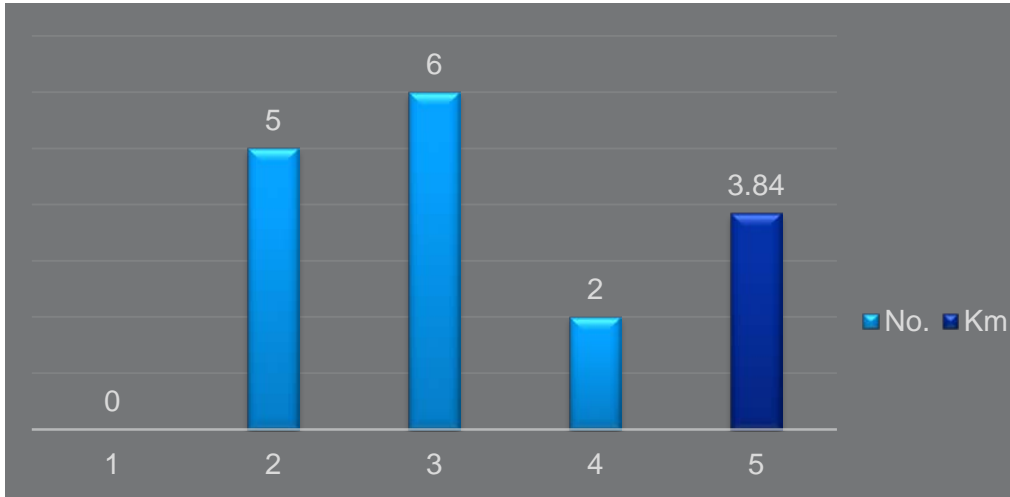
- Integrated 150 KPIs of 33 departments
- Introduced new look & feel
- Implemented **Multi-Star Ratings rules**
- **Ranking of Districts**



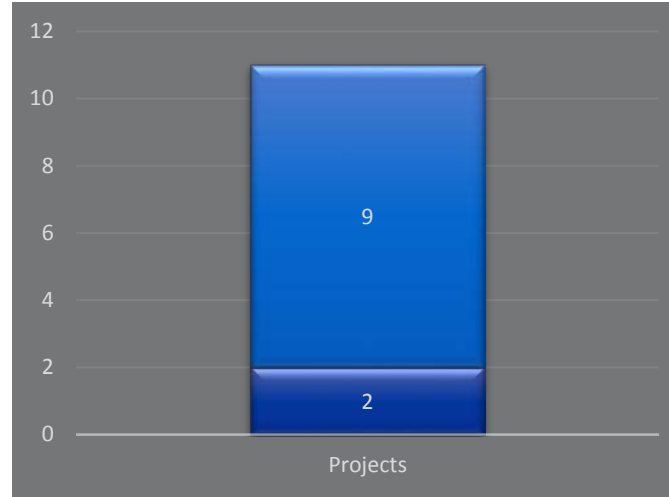
- Integrated **220 KPI** of 33 departments
- Introduced new look & feel
- Citizen Feedback mechanism
- CM Instruction & ATR Report
- Introduced District, Constituency Dashboard

# Project monitoring for transmission lines

Today's Progress

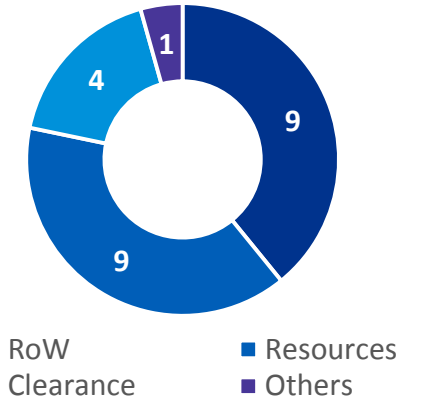


Reported Zero Progress

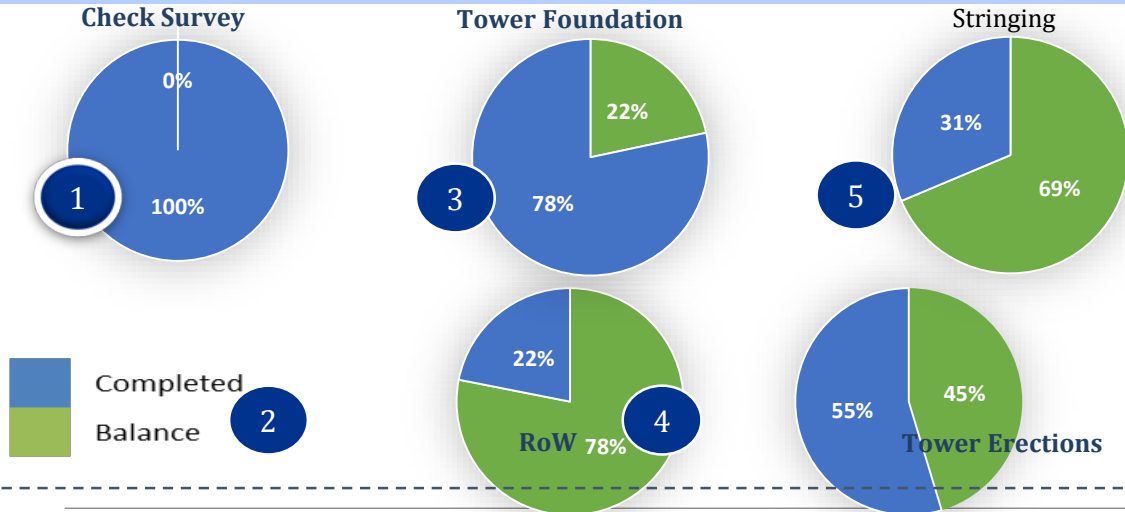


Projects – 51 Nos.

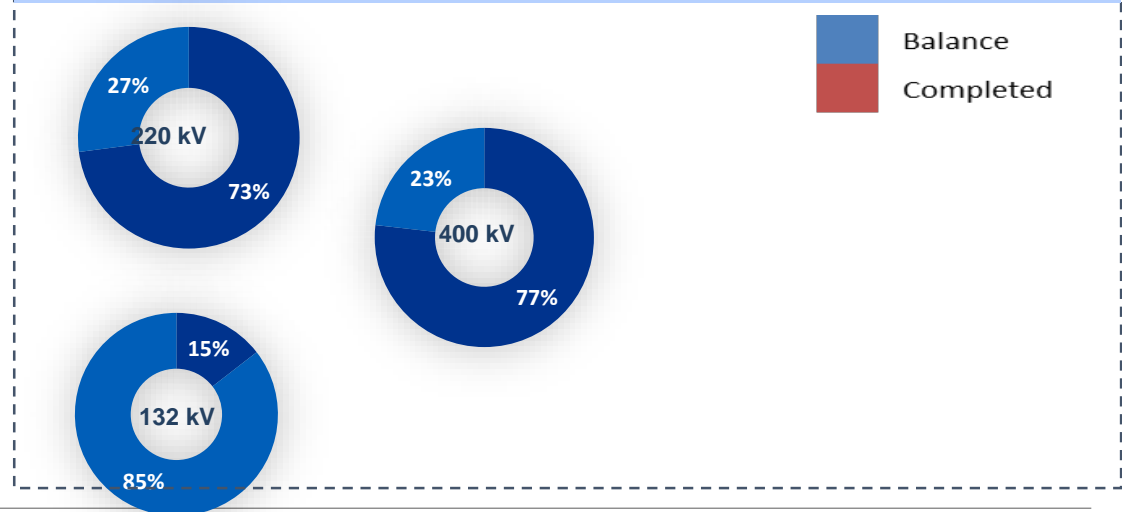
Issue Chart



STAGE-WISE ACHIEVED VS BALANCE



KMS OF TRANSMISSION LINE ELECTRIFIED





# Use Case - Power



## SAP Implementation

- AP Power Sector has implemented following modules of SAP
  - HCM
  - Finance & Control
  - Material Management
  - Project Systems
  - Plant Maintenance
  - Master Data Management
  - Business Intelligence & Enterprise Portal
  - SAP HANA

## Central Billing System (CBS)

- An in-house application developed for automation of billing collection services
- Billing activities of all AP electricity consumers are carried out through this application.
- This application is integrated with all Online Revenue collection Counters, CSC, MATS.

## GIS

- ❖ Consumer indexing and asset mapping done using Arc GIS to improve operational efficiency

# Use Case – Civil Supplies



## Civil Supplies – Biometric authentication and Aadhaar Linkage in Public Distribution System

Real Time  
Data  
gathering at  
field levels

1

Alerts are  
generated  
automatically

2

Alerts are  
transferred to the  
CSDT/VRO/Dealer  
grp in Kaizala

3

CSDT/Dealer/VRO  
takes action and  
reports in Kaizala.  
Same is monitored  
through Kaizala  
Dashboard

4

Preemptive  
action can be  
taken based on  
historical data.

5

Ration is supplied  
through biometric  
authentication

Authentication  
linked with  
Aadhaar database

Weight scale  
linked to POS and  
receipt is  
generated

Allocated quota of  
ration to each fair  
price shop

Monthly  
replenishments  
are done based on  
closing stock

Discrepancies are  
flagged at CORE  
Dashboard



Thank you

Sri K. Vijayanand, IAS  
Secretary, Government of Andhra Pradesh  
ITE&C Department  
[secy\\_itc@ap.gov.in](mailto:secy_itc@ap.gov.in)