



Future of Digital Transformation

J Satyanarayana

Chief Advisor, C4IR India

World Economic Forum

Chairperson, **The DPI Academy**

3 Sep 2024

My digital journey !

PC 2 QC – 3 decades !

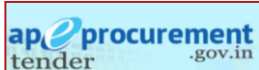
30

+

eGov Projects

10

National Frameworks



1990's



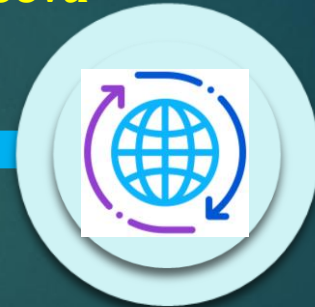
Social Pensions
COMPACT
CARD
e-Seva

2000's



e-Procurement (AP & Karnataka), AP Online
MCA21, BangaloreOne, **Passport Seva**

2010-14



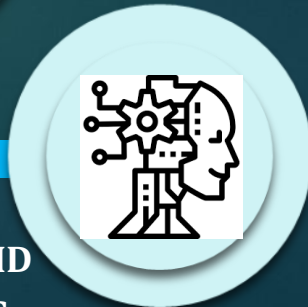
WebLand, **Mee Seva**, **eTAAL**
MeghRaj, CORE, e-Office

2015-20



BharatNet, InDEA 1.0
Digital Service Standard
Agile InDEA, NDHB, PMJAY
Aadhaar Seva Kendra

2021...



[InDEA 2.0]
NDEAR-S, AYUSH GRID
AI4AI, FIRST Cancer Care
ADeX, AgriJSON,
Digital Health Blueprints for 4 countries..

The Decade

- **Aadhaar** – the largest Digital ID System in the world
- **UPI** – the largest digital payment ecosystem
- **GSTN** – the largest tax network
- **PM Jan Aarogya Yojana** – the largest health insurance system
- **FASTag** – nationwide network of toll collection
- **DigiLocker** – the largest system of verifiable credentials
- ... and more

See the result here → <https://etaal.gov.in>

The emerging TechAde

1. From citizen-centric to citizen-driven & citizen-controlled

- Data Protection | Data Sovereignty

2. From IT to ET

- ET = Ecosystem Technologies
- ET = Emerging Technologies



3. From Transformation to Sustainability

- GreenTech | ESG | Circular Economy

4. The Age of DPI -

- Create & spread the Knowledge & Capacities on DPI



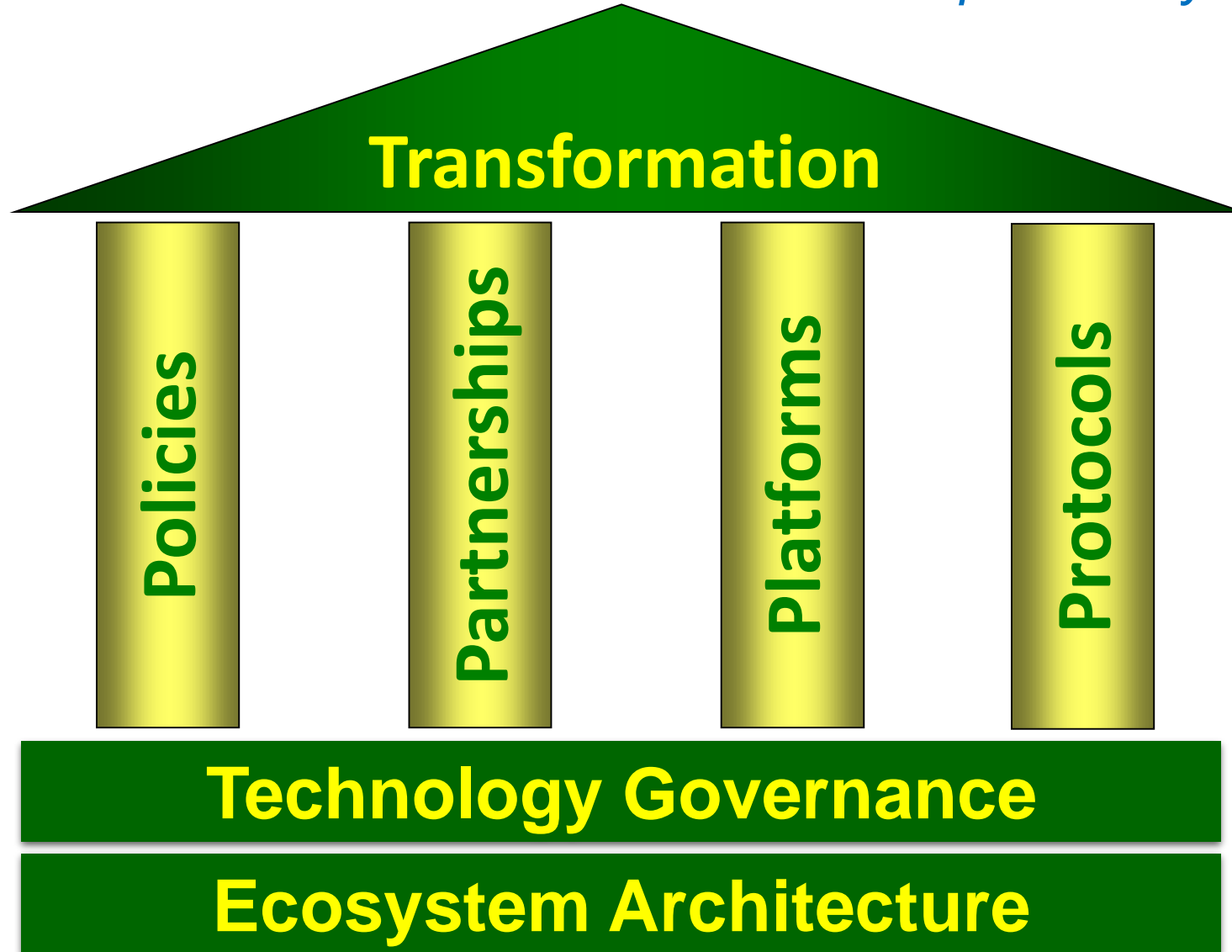


Thank You

j.satya@nic.in

Digital Ecosystems

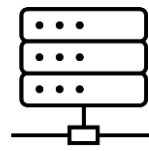
A confederation of autonomous and interoperable systems





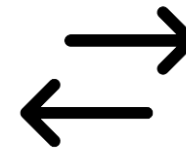
Policies

- **Digital Transformation Policy**
 - . Citizen-First , Digital-First
 - . Opportunity assessment
- **Innovation Policy**
- **Data Protection Law**
- **Data Management Policy**
- **Cybersecurity Policy**
- **Policy on Business Process Transformation**



Platforms

- **Open Data Platform**
- **Data Exchanges/ Gateways**
- **Citizen Engagement platform**
- **Digital & Financial Literacy Platform(s)**
- **Digital Identity Platform**
- **Digital Payment Platforms**
- **Sectoral Sandboxes**



Protocols

- **Protocols for interoperability**
 - . Intra and cross-sectoral data exchange
 - . Cross-border transactions
- **Metadata Standards**
- **Data Formats**
- **Open API Framework**
- **Taxonomies / Ontologies**



Partnerships

- **Frameworks for PPP, PPC, Pvt-Pvt collaborations**
- **Partnerships for developing**
 - . Public Digital Infrastructure
 - . Public Digital Goods
- **Capacity Building**
- **Alliance on 'Future of Work'**
- **Responsible development of emerging technologies**

Technology Governance

- **Meta-Framework for Technology Governance**
- **Framework of Agile Governance**
- **Framework for Investment in Inclusivity**

Ecosystem Architecture

- **Principles of Digital Ecosystem**
- **Principles and structure of Federated Architecture**
- **Institutional structure for developing 'core building blocks'**

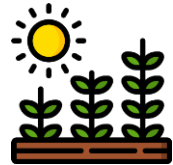


AI4AI - Saagu-Baagu

- Saagu-Baagu means ‘Economic advancement through Agriculture’.
- It is a pilot implementation of AI4AI Framework that advocates integrated deployment of multiple technologies across the value chain to benefit the farmer.
- Implemented on a PPP Model for Chili farmers in Khammam District during 2022-2023



52,000 Farmers
(2024)



Chili crop

Use cases piloted



Crop advisory using
AV/Chatbot



AI based soil testing;
result in 20-30 mins



AI based quality testing
and certification



Connecting farmers to
market using e-commerce



*Independent evaluation by IMPACT reported a **18%** increase in net income due to a mix of advisories, quality testing and market connect, attributable to Saagu-Baagu initiative.*

Based on the results of pilot phase, the Telangana State government has launched phase II of the initiative to touch 500,000 farmers of five crops in ten districts during 2024-25.

FIRST Cancer Care MeghCanCare



- Use of Technology to combat Cancer through 3 methods
 - Screening, early detection & referrals
 - Capacity building at all levels
 - Mass campaign for Cancer awareness
 - Oncology Data Model
- Govt of Meghalaya launched the program in December 2022
 - With Apollo Telehealth Network Foundation as Partner
- Focus on 5 types of cancer
 - Breast, Cervical, Lung, Oral & esophageal
- Over 4 lakh screenings done to 1.2 lakh persons



About DPI

- A DPI is a set of open **digital capabilities** that can create **impact at scale**, enable an **ecosystem** to be developed and contains **effective safeguards** for the protection of the interests of the stakeholders.

Understanding the key attributes of a DPI

Digital Capabilities include

- Systems & Solutions
- Laws, Policies
- Human & Institutional Capacities
- Platforms
- Partnerships
- Protocols

Societal Impact @ Scale implies

- National or State Scale
- Sector-wide spread
- Promoting Innovation
- Ensuring equity & inclusion

Enabling ecosystem involves

- Interoperability
- Openness
- Participation
- Modularity
- Competition
- Network Effect

Safeguards include

- Robust governance
- Privacy-by-design
- Security-by-design
- Anti-monopoly
- Accountability
- Transparency



- A new institution dedicated to the cause of DPI in the developing countries
- Based on three pillars of the Academy
 - Knowledge Creation & Dissemination
 - Capacity Building at top & mid levels
 - Promoting DPI Communities
- A joint initiative of Artha Global & eGov Foundation
- Being soft launched on **19 June 2024**
- Programs to be run in partnership with premier training institutions & industry
 - 1 to 3-day CB programs designed

